
To: Geoff Strack, PE, Waste Connections From: Brad Sullivan, PE, Stantec
File: 227704387 Date: January 7, 2023

Reference: WCI Austin Landfill, LLC 2022 Annual CCR Inspection Report

Purpose

This memorandum fulfills the requirements of 40 CFR § 257.84 Inspection Requirements for CCR Surface Landfills, Part b, regarding an annual inspection by a qualified professional engineer.

Background and Applicability

WCI Austin Landfill, LLC owns and operates the WCI Austin Landfill, which is a Class III landfill facility that operates under MPCA Solid Waste Permit SW-514 that was originally issued in 1996. The facility is accessed via 52563 243rd St, Austin, MN, which is located off and State Highway 218, north of Austin, MN.

Landfill cells Phase 1 through 5 are currently permitted and constructed. Phase 1 is unlined and has not received any CCR material. Phase 2 is composite lined with a portion constructed as an overlay liner on Cell 1's southern slope. Phases 3, 4, and 5 also have a composite liner. Most recently, Phase 5 was constructed in 2021 and became operational in late 2021. The site began receiving CCR material in June of 2015 and it has all been placed in the various Phases 2 through 5. Currently, operations are split between the upper lifts of Phase 2 and 3 and the initial lower lifts of Phase 4 and Phase 5.

See Figure 1 which is a facility site plan.

CCR Landfill Inspection (40 CFR § 257.84)

On October 24, 2022, Brad Sullivan, PE, of Stantec conducted the on-site inspection of the CCR landfill. As part of the inspection, the following operating and inspection records were reviewed:

- Weekly visual CCR inspections performed by landfill operators;
- Previous annual inspections performed by a licensed professional engineer;
- CCR unit design and construction information required by § 257.73(c)(1) and §257.74(c)(1); and
- Previous periodic structural stability assessments required under § 257.73(d).

Landfill Cell Design

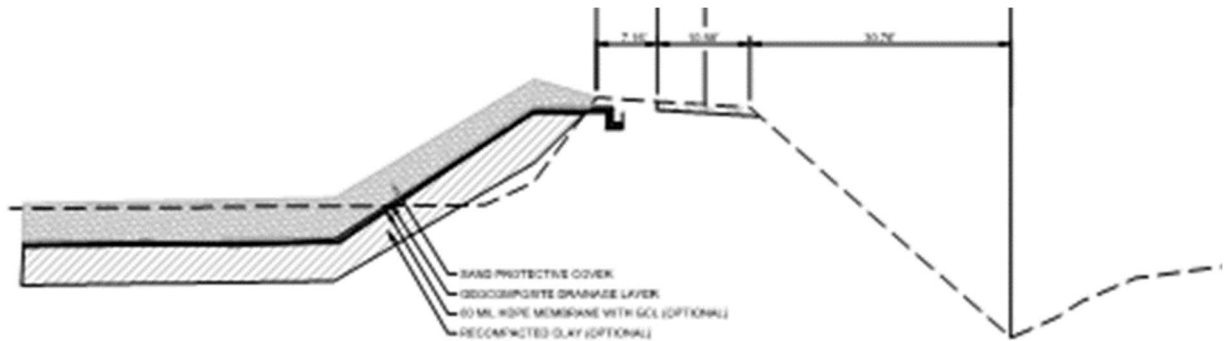
In general, the facility's landfill cell embankments were constructed using on-site and imported borrow materials. A typical perimeter section, taken from the Cell 2, Phase 2 Construction Documentation Report, prepared by CRA in November, 2012 is shown below.

January 7, 2023

Geoff Strack, PE

Page 2 of 4

Reference: WCI Austin Landfill, LLC 2022 Annual CCR Inspection Report



Typical Landfill Berm Detail

During the inspection there were no signs of landfill cell embankment distress, no signs of waste slope instability, or other CCR landfill issues observed. The landfill embankments and interim covered slopes were generally in good condition with a well-established vegetation cover and no signs of significant erosion.

Photos were taken during the inspection. Figure 1 presents the photo locations, and Attachment 1 contains a photo log and the photos taken.

CCR Landfill Inspection Report

40 CFR § 257.84, Subpart b.2 requires the following topics in italics be addressed within this report. The requirements are shown in italics with the response immediately afterwards for each item.

- (i) *Any changes in geometry of the impounding structure since the previous annual inspection;*

As noted above, Phase 5 is the most recently constructed landfill cell, which was completed in 2021.

There were no apparent changes to the embankment geometry of Cells 1, 2, 3, 4, or 5 when compared to the design drawings or the past inspection reports. This year's annual aerial photogrammetry survey was performed on October 12, 2022, which the estimated in-place volume of total waste (including all accepted wastes) is based on. A comparison 2022 and 2021 aerial survey confirm that the embankment and slope topography is substantially unchanged with no significant movement. The 2022 aerial survey is included as Figure 2.

- (ii) *The approximate volume of CCR contained in the unit at the time of the inspection;*

The approximate volume of CCR material contained in the landfill at the time of the inspection is 125,650 cubic yards.

January 7, 2023

Geoff Strack, PE

Page 3 of 4

Reference: WCI Austin Landfill, LLC 2022 Annual CCR Inspection Report

(iii) Any appearances of an actual or potential structural weakness of the CCR unit, in addition to any existing conditions that are disrupting or have the potential to disrupt the operation and safety of the CCR unit and appurtenant structures; and

None of the following were observed that could indicate structural weakness;

- Signs of slumping or rotational movement;
- Lateral or vertical distortion of the embankment crest;
- Seepage on the outboard slopes; or
- Borrowing or damage due to vectors.

(iv) Any other change(s) which may have affected the stability or operation of the impounding structure since the previous annual inspection.

There were no changes noted that could potentially affect the stability or operation of the landfill berm. Observations in 2022 were consistent with those noted in the previous report.

Notification Requirements

The WCI Austin Landfill is in compliance with the recordkeeping requirements specified in § 257.105(g), the notification requirements specified in § 257.106(g), and the internet requirements specified in § 257.107(g).

Conclusions and Recommendations

The WCI Austin Landfill facility has been constructed and operated in accordance with the facility permit and the CCR regulations. No embankment or waste slope stability issues were observed during the visual inspection.

40 CFR § 257.83, Subpart b.5 and 40 CFR § 257.84, Subpart b.5 each require that if a deficiency or release is identified during an inspection, the owner or operator must remedy the deficiency or release as soon as feasible and prepare documentation detailing the corrective measures taken. There were no deficiencies or releases related to CCR operations that were identified during the inspection.

The WCI Austin Landfill facility has been constructed and operated in accordance with the facility permit and the CCR regulations. No embankment or waste slope stability issues were observed during the visual inspection.

January 7, 2023

Geoff Strack, PE

Page 4 of 4

Reference: WCI Austin Landfill, LLC 2022 Annual CCR Inspection Report

40 CFR § 257.83, Subpart b.5 and 40 CFR § 257.84, Subpart b.5 each require that if a deficiency or release is identified during an inspection, the owner or operator must remedy the deficiency or release as soon as feasible and prepare documentation detailing the corrective measures taken. There were no deficiencies or releases related to CCR operations identified during the inspection.

Stantec Consulting Services Inc.



Brad Sullivan, PE

Civil Engineer, Associate

Cell: (603) 289-5257

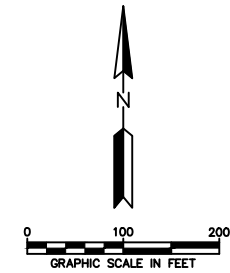
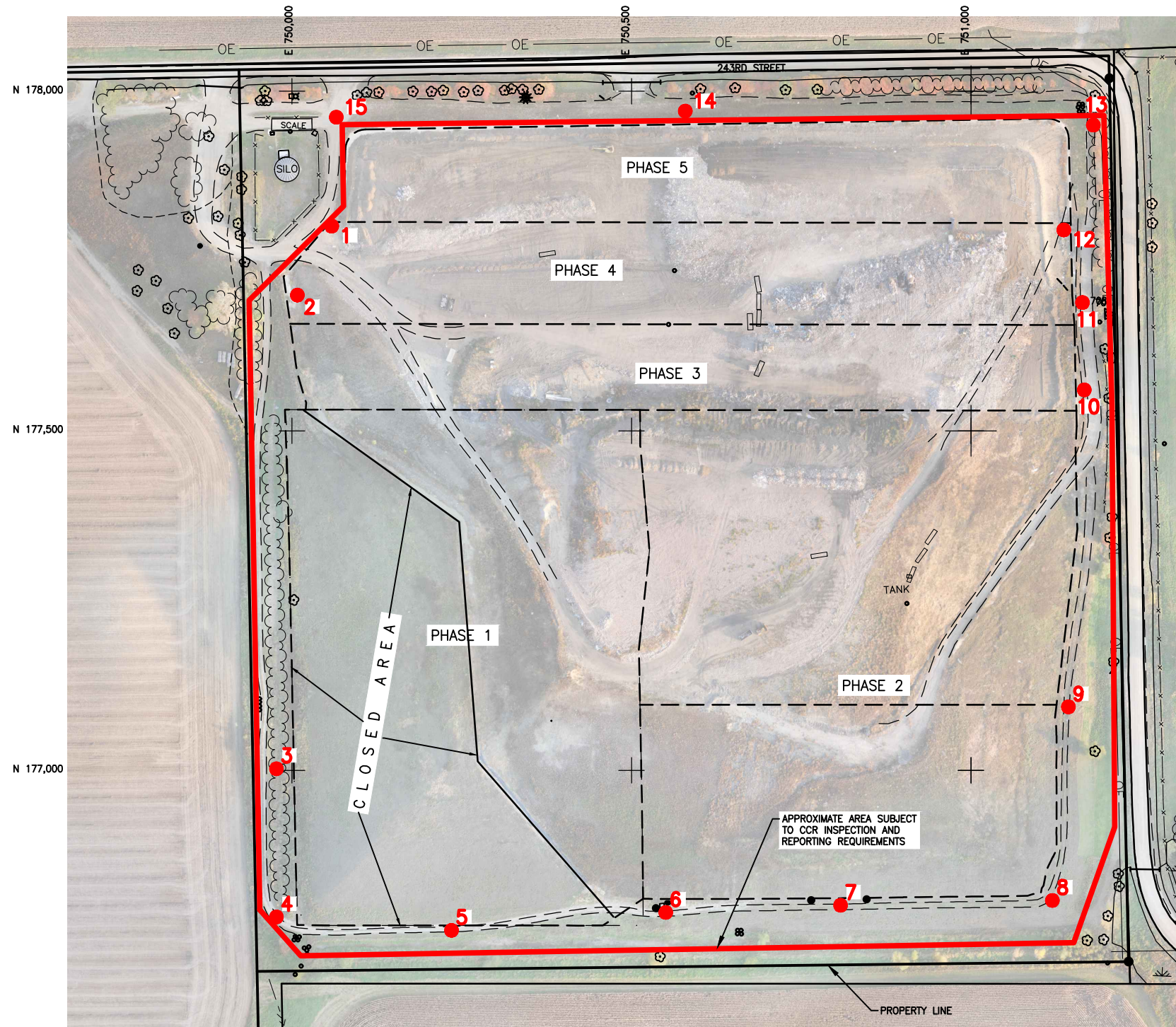
Brad.sullivan@stantec.com

I hereby certify that this engineering document was prepared by me or under my direct supervision and that I am a duly registered Professional Engineer under the laws of the State of Minnesota.



Brad Sullivan, PE # 56502

January 7, 2023



LEGEND
 ● PHOTO LOCATIONS

NOTE:
 BASE MAPPING HAS BEEN UPDATED BY AERIAL
 SURVEY PROVIDED BY FIRMATEK MAPPING COMPLETED
 ON OCTOBER 12, 2022.

REV	REVISION DESCRIPTION	DWN	APP	REV DATE

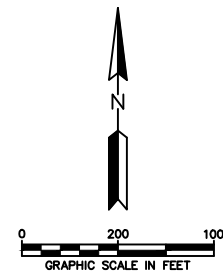
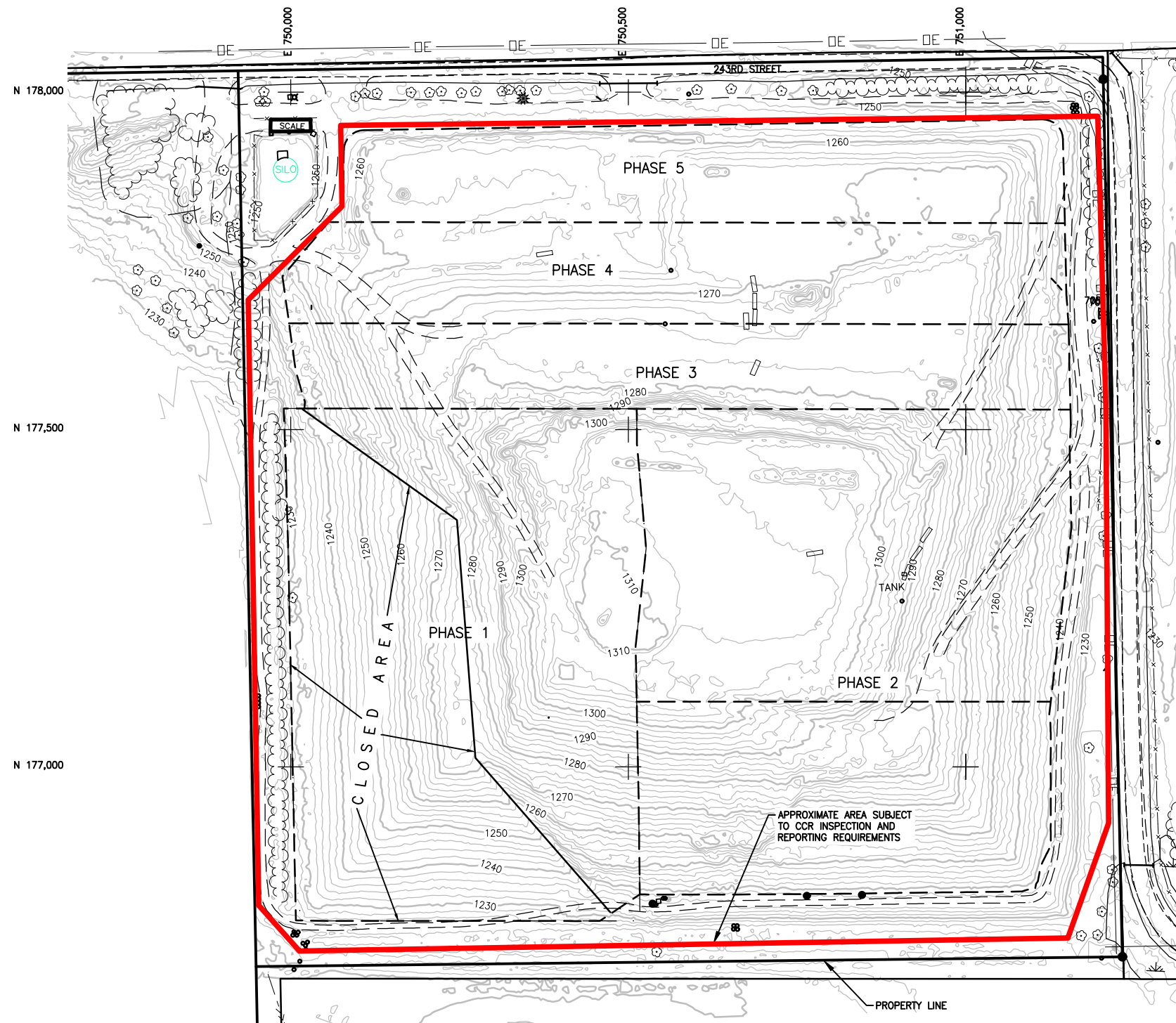
SEAL

SUB CONSULTANT

PRIME CONSULTANT

PROJECT TITLE
2022 CCR INSPECTION REPORT
 SKB (AUSTIN) ENVIRONMENTAL, LLC
 AUSTIN, MINNESOTA

SHEET TITLE			
PHOTO LOCATIONS			
DWN BY	CHK'D	APP'D	DWG DATE
JVB	TJS	BWS	JAN. 2023
PROJECT NO.	SHEET NO.	SCALE	
227704387	FIGURE 1	AS NOTED	
			REV NO.
			0



NOTE:
BASE MAPPING HAS BEEN UPDATED BY AERIAL
SURVEY PROVIDED BY FIRMATEK MAPPING COMPLETED
ON OCTOBER 12, 2022.

#	DESCRIPTION	XXX	XXX	XX/XX/XX	
REV	REVISION DESCRIPTION	DWN	APP	REV DATE	

SEAL

SUB CONSULTANT



PROJECT TITLE
2022 CCR INSPECTION REPORT

SKB (AUSTIN) ENVIRONMENTAL, LLC
AUSTIN, MINNESOTA

SHEET TITLE
SITE MAP

DWN BY	CHK'D	APP'D	DWG DATE
JVB	TJS	BWS	JAN. 2023
PROJECT NO.		SCALE	
227704387		AS NOTED	
SHEET NO.		REV NO.	
FIGURE 2		0	



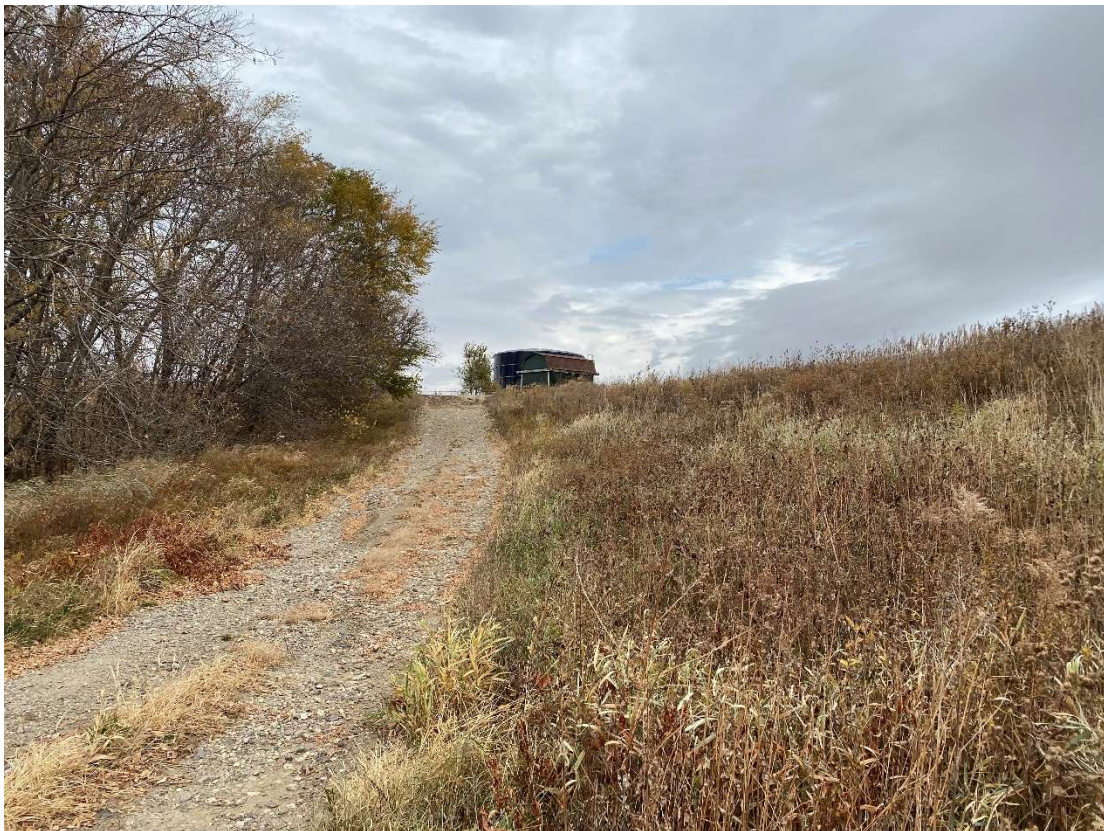
Location 1 – Looking Southwest, Phase 4 Anchor Trench



Location 2 – Looking Northeast, Phase 4 Anchor Trench



Location 2 – Looking South, Phase 3/1 Western Perimeter



Location 2 – Looking North, Phase 4 West Perimeter



Location 3 – Looking South, Toe of Phase 1 Western Slope



Location 3 – Looking North, Toe of Phase 1 Western Slope



Location 4 – Looking North, Toe of Phase 1 Western Slope



Location 4 – Looking East, Toe of Phase 1 Southern Slope



Location 5 – Looking West, Toe of Phase 1 Southern Slope



Location 5 – Looking East, Toe of Phase 1 Southern Slope



Location 6 – Looking West, Phase 1 Southern Slope



Location 6 – Looking West, Phase 1/2 Overlay Liner & Southern Slope



Location 6 – Looking East, Phase 2 Southern Slope



Photo 14: Location 6 – Looking East, Phase 2 Southern Berm



Location 7 – Looking West, Phase 2 Southern Perimeter Road and Slope



Location 7 – Looking West, Phase 2 Southern Berm



Location 7 – Looking East, Phase 2 Southern Perimeter Road and Slope



Location 7 – Looking East, Phase 2 Southern Berm



Location 8 – Looking West, Phase 2 Southern Perimeter Road and Slope



Location 8 – Looking West, Phase 2 Southern Berm



Location 8 – Looking North, Phase 2 Eastern Slope



Location 8 – Looking North, Phase Eastern Berm



Location 9 – Looking South, Phase 2 Eastern Perimeter Road & Slope



Location 9 – Looking North, Phase 2 Eastern Perimeter Road & Slope



Location 10 – Looking North, Eastern Perimeter Road



Location 10 – Looking South, Phase 2 Eastern Slope and Interior Access Road Entrance



Location 11 – Looking North, Phase 4 Eastern Anchor Trench



Location 11 – Looking South, Phase 4 Eastern Anchor Trench



Location 12 – Looking South, Phase 4 Eastern Anchor Trench & Phase 3 Eastern Waste Slope



Location 12 – Looking North, Phase 5 east anchor trench



Location 13 – Looking South, Phase 5 Western Cell Limit



Location 13 – Looking South, Phase 5 Toe of Berm



Location 13 – Looking West, Phase 5 Cell Limit



Location 13 – Looking West, Phase 5 Toe of Berm



Location 14 – Looking East, Phase 5 Toe of Berm



Location 14 – Looking East, Phase 5 Cell Limit



Location 14 – Looking West, Phase 5 Cell Limit



Location 14 – Looking West, Cell 5 Landfill Berm



Location 15 – Looking East, Phase 5 Cell Limit



Location 15 – Looking South, Phase 5 Cell Limit